



Church Street, Gawber, Barnsley S75 2RL Tel: 01226 244244

## PROFILE: LOCUM HOSPICE PRACTITIONER (PALLIATIVE MEDICINE)

### DETAILS

**Department:** Medical

**Manager Job Title:** Consultant in Palliative Medicine in conjunction with the Patient Services Manager

**Supervising Clinicians:** Consultant in Palliative Medicine

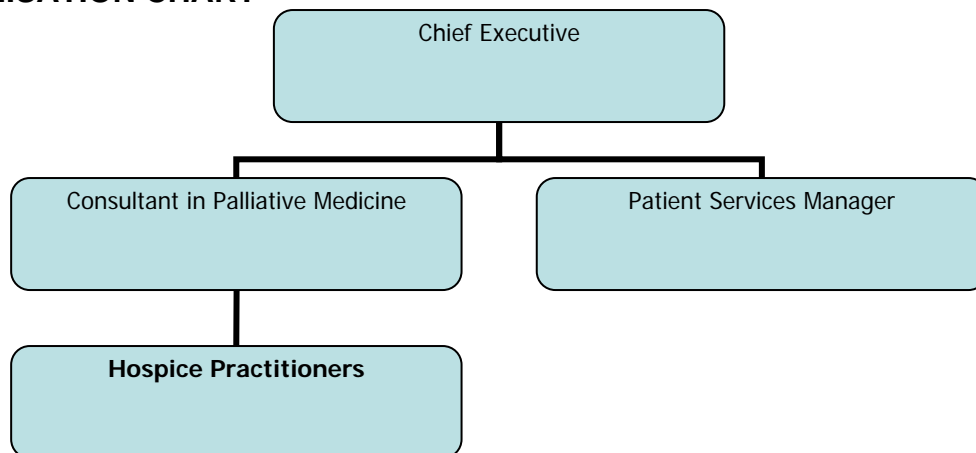
### PURPOSE

The Hospice Practitioners work closely with the existing, experienced, multi-professional team to help ensure continuity of high level medical care for Hospice patients. This will include in-patients and patients attending The Limes.

### ROLE OF DEPARTMENT

To provide medial cover for in-patients of Barnsley Hospice and for those attending The Limes.

### ORGANISATION CHART



## **RESPONSIBILITIES**

### **Clinical:**

- To provide with the medical team, medical care to in-patients at Barnsley Hospice. This includes the assessment of patients admitted to the unit and participation in the formation and implementation of the plan of care, monitoring their medical problems and progress.
- To provide medical input to The Limes day patients at Barnsley Hospice.
- To provide advisor telephone support to Care Services Direct and Barnsley Hospital NHS Foundation Trust staff.
- To participate in the on-call rota for out of hours medical cover.
- To maintain and administer medical records as per Hospice policy.
- To complete patient discharge summaries and undertake statutory duties such as completion of certificates.
- To ensure confidentiality of information is preserved at all times, whether at or away from work.
- To be involved in audit and research programmes as appropriate.
- To actively participate in multi-professional discussions and meetings.
- To help ensure that the high standard of medical care and support for carers and families at the Hospice is maintained.
- To participate in Palcall (out of hours specialist telephone advice service).

### **Professional/Management:**

- To work closely with the Consultant in Palliative Medicine to ensure medical provision throughout the Hospice.
- To liaise with the Patient Services Manager and senior nursing staff regarding admissions.
- To maintain standards and quality of care throughout the services delivered by the Hospice, by participating in standard setting and audit, and attending relevant meetings.
- To support the development of clinical governance, including a commitment to clinical audit, risk management, staff development, peer review and appraisal within the Hospice governance framework.

### **Education:**

- To participate in in-house education opportunities and attend external study days as appropriate.
- Support and teaching of medical students and those from other disciplines.

## **KEY TASKS AND RESPONSIBILITIES**

The Hospice Practitioners will be expected to participate in the on-call rota. The on-call commitment is to Barnsley Hospice inpatient unit and to provide out of hours advice to professionals in the community and Barnsley Hospital.

When on call, the Hospice Practitioners will have access to an on-call Consultant.

Weekend on call runs from 5.00 pm Friday to 9.00 am Monday, attendance would be expected on a Saturday morning.

Week day out of hours cover is from 5.00 pm to 9.00 am. The post is non-resident.

## **STUDY AND TRAINING**

The hospice is committed to CPD, and will contribute to the funding of appropriate courses where possible, approved by Medical Director/Consultant in Palliative Medicine.

The Hospice has a well stocked library.

***This Profile is an outline of responsibilities and will be subject to review, in consultation with the Hospice Practitioners in order to meet the changing needs of the Hospice.***

## **COMMUNICATIONS AND WORKING RELATIONSHIPS**

### **INTERNAL**

Patient Services Manager, IPU Manager, The Limes Manager, Nursing Team, Complementary Therapy Team, Family Team, Lymphoedema Practitioner, Physiotherapist, Clinical Administration Team, Volunteers

### **EXTERNAL**

GPs, District Nurses, Community and Hospital Macmillan Nurses, Consultants in Barnsley and Sheffield, Allied Health Professionals, Barnsley PCT



## **PART 2 - PERSON SPECIFICATION**

### **PERSONAL REQUIREMENTS**

#### **ESSENTIAL:**

- Full registration with the GMC.
- Post registration experience in relevant specialties.
- Knowledge of holistic care, and the principles of palliative medicine.
- A flexible approach to patient management and team working.
- Ability to provide leadership and direction relating to own discipline.
- A friendly, open, approachable personality with a sense of humour.
- Effective team member, able to recognize the skills of others within a team.
- Awareness of the need for good structures of support to cope with death and dying within the field of palliative medicine
- A commitment to personal development and continuing medical education.

#### **DESIRABLE:**

- MRCP/MRCGP.
- Experience of working in palliative medicine or further training in the speciality.



## **ROLE DETAILS**

- Role :** **Hospice Practitioner**
- Sessional rate :** £113.93 per session
- Session:** Able to provide sessional cover including bank holidays  
Minimum commitment to 1 in 8 weekend on call rota  
Able to provide occasional evening on call cover
- Status:** Locum – as and when required